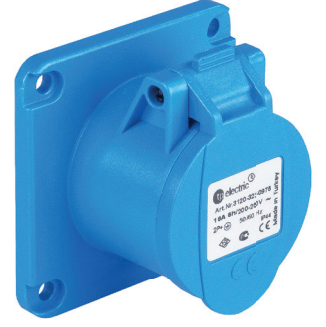


CEE Norm 3x16A Düz Makine Prizi (Sabit Flanş) - 70x70
CEE Norm 3x16A Panel Mount Socket Outlet (Str.) - 70x70

Ürün Kodu / Ref. No:
3120-321-0970

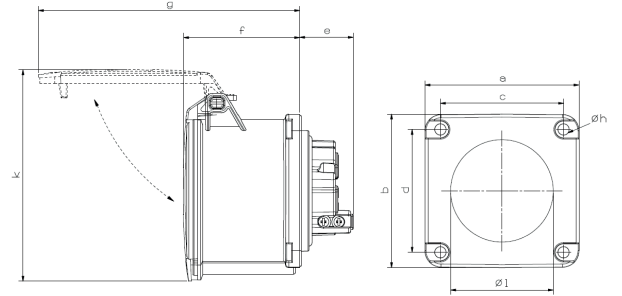


TEKNİK ÖZELLİKLER / TECHNICAL SPECIFICATIONS

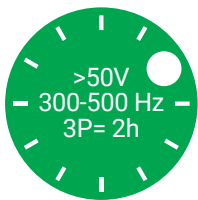
| | |
|--|---|
| Amper / Ampere | 16A |
| Koruma Sınıfı / Protection Class | IP 44 |
| Kontakt Sayısı / Number of Poles | 3 (2P + E) |
| Voltaj / Voltage | 200 - 250 V. |
| Kontakt Pozisyonu / Clock Position | 6h |
| Kontakt Malz. / Contact Material | Pirinç / Brass (CuZn) |
| Gövde Malz. / Housing Material | PA6 |
| Hertz | 50-60 Hz |
| Bağlantı Şekli / Connection Type | Vidalı Bağ. - Screw Con. |
| Çalışma Sıcaklığı (-25 / +40 IEC 60309'a göre) Operation Temp. (-25 / +40 According to IEC 60309) | -25 / +80 (1 Saat'e kadar 100 °C) -25 / +80 (100 °C for 1 hour) |

ÖLÇÜLER / DIMENSIONS

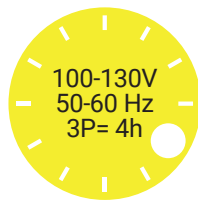
| | | | |
|---|-----------|----|------------|
| a | 70 | f | 49 |
| b | 70 | g | 95 |
| c | 56 | øh | 5.5 |
| d | 56 | øl | 44 |
| e | 25 | k | 86 |
| Kablo Çapı / min. Cable Diameter (mm ²) | | | 1.0 |
| Kablo Çapı / max. Cable Diameter (mm ²) | | | 2.5 |



FARKLI TOPRAKLAMA KONTAK POZİSYONLARI (Saat Yönleri)
DIFFERENT EARTH CONTACT POSITIONS (Clock Positions)



3120-321-0970-2h



3120-321-0970-4h



3120-321-0970



3120-321-0970-7h



3120-321-0970-9h



Tel: +90 232 880 90 01
Fax: +90 232 880 90 02



info@tpelectric.com.tr



Kemalpaşa O.S.B. 600 Sk. No:364
35730 Kemalpaşa / İZMİR - TÜRKİYE